



QUANT EDGE
FOUNDATION

ANNUAL REPORT

2021





About Quantedge Foundation

Quantedge Foundation (Singapore) Ltd (“the Foundation”) was incorporated in Singapore on 26 August 2015 as a Company Limited by Guarantee and registered as a Charity on 15 January 2016. It has been an approved Institution of a Public Character since 17 February 2016.

Company Registration Number (UEN)
201532866G

Registered Address
20 McCallum Street 15th Floor, Tokio Marine Centre Singapore 069046

Banker
DBS Bank Ltd.
Standard Chartered Bank (Singapore) Ltd

Auditor
Baker Tilly TFW LLP

Corporate Secretary
Allen & Gledhill LLP

Table of Contents

About Quantedge Foundation	3
Our Vision, Mission and Values	4
Chairperson's Message	5
Our Philanthropic Thrusts	6
Key Highlights	7
Board of Directors	8
Board Committees and Our Team	9
The Early Years	10
The Growing Years	14
The Blossoming Years	22
Our News Features	28



Our Vision, Mission and Values

Vision

UNEQUAL CIRCUMSTANCES | EQUAL OPPORTUNITY

A more inclusive and resilient society, where everyone has equal access to transformational opportunities that enable them to achieve their full potential.

Mission

We seek to deliver impactful solutions to a broad range of social challenges in Singapore by designing and/or funding innovative programmes aligned with our mission to:

Transform Lives

Improve the access of children and youth from disadvantaged backgrounds to quality care, education and developmental opportunities, to help them unlock their potential, fulfil their dreams and build a better future for their families and themselves.

Empower Communities

Strengthen the capacities of vulnerable communities, facilitate community ownership and action, to sustain change and build an inclusive, resilient society.

Catalyse Change

Spearhead new approaches and leverage strategic networks, research and technology, to raise awareness and galvanise change across the sector.

Core Values

Impact

We aspire to do good better. We seek effective solutions that address the root causes and have measurable, sustainable outcomes.

Collaboration

We work with local communities and partner organisations, leveraging their wisdom and resources to achieve shared objectives and amplify our collective impact.

Innovation

We look for bold ideas and novel approaches to solving the problems of today and are prepared to make long-term social investments for a better tomorrow.

Inclusion

We respect differences in individuals and believe that we can harness the diversity of collective experiences, perspectives and opinions for greater impact.

Integrity

We hold ourselves and our partners accountable to high standards of organisational integrity and responsible stewardship.

Chairperson's Message

Emerging from the pandemic, we approached 2021 with resolve to equalise opportunities for children and youths in unequal circumstances, even as COVID-19 continued to present uncertainties.

Amongst our various efforts, equalising access to tertiary education remains a key priority. For youths from less privileged backgrounds, we believe that tertiary education is a powerful leveller, providing them with much needed access to developmental and career opportunities, social networks and cultural capital. We feel strongly that anyone who aspires to pursue further education should not be deprived of the opportunity to do so because of their financial circumstances. This year, we strengthened our partnership with the National University of Singapore with a pledge to seed fund the University's commitment to guarantee a tuition-free education for all Singaporean students with the greatest financial need. Together with the other existing University Access initiatives at the Singapore Management University and the Singapore University of Technology and Design, half of the autonomous universities in Singapore now offer a truly needs-blind university education. This is a major step forward in our continuing push to broaden university access in Singapore, and we are confident that more universities will step up to provide similar guarantees in time.

Beyond individuals, we recognise that the community plays a crucial role in enabling equal opportunity sets for children from disadvantaged backgrounds. Proactive, targeted and co-ordinated multi-stakeholder support is key to effectively address the complex challenges faced by these vulnerable children at the outset, and lift them out of intergenerational poverty. Hence, we are supporting two pilot Community Link initiatives - 3Pumpkins' Tak Takut Kids Club at Jurong West and CampusImpact's Study Buddy at Marsiling - to align and better integrate our efforts in expanding the developmental opportunities available to children from low-income backgrounds with other community stakeholders.

We are not one to shy away from new paths when it comes to moving the needle on social mobility. We are willing to take on calculated philanthropic risk in supporting new, innovative programmes that have yet to be tried and tested but show potential for impact and scale. We are excited to embark on a partnership with =DREAMS (Singapore) to set up a first-of-its-kind boarding facility to provide wraparound after-school care to children from public rental housing communities. A home-away-from-home with tailored developmental programmes and holistic support, =DREAMS seeks to empower promising children to dream and realise a future where they are not limited by their family circumstances.

Looking ahead, we are confident that we will continue to expand our impact as we double down on our existing programmes, forge new partnerships and explore novel approaches with the potential for scale. In doing so, we hope to elevate societal gains and inspire positive change towards enabling upward social mobility in Singapore.

Lee Yin Chao

Lee Yin Chao
Chairperson



Our Philanthropic Thrusts

We curate, design and fund programmes and research to uncover, understand and address the root causes of key social challenges in Singapore. We collaborate with like-minded partners to pilot innovative and scalable approaches with the potential to bring about long-term, sustainable changes to the social sector.

In particular, we care deeply about creating and enabling access to opportunities for children and youth from less-privileged backgrounds, to do well in life. The programmes that we have designed or support span across the different life stages.



THE EARLY YEARS

- Circle of Care

THE GROWING YEARS

- Raffles Scholarship Series
- Integrated Care Programme
- =DREAMS
- Tak Takut Kids Club
- Study Buddy @ Marsiling ComLink



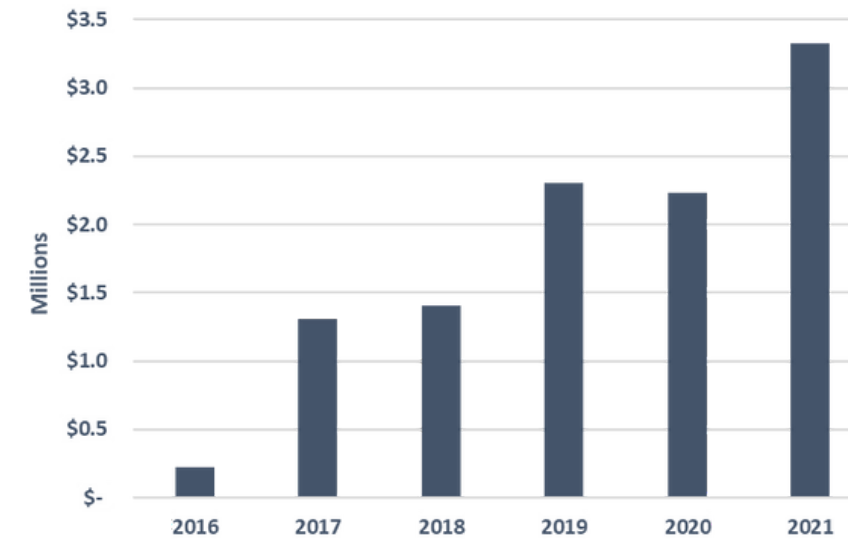
THE BLOSSOMING YEARS

- SMU Access
- SUTD Education Opportunity Grant
- NUS Enhanced Financial Aid Scheme



Key Highlights

Total Donations/Disbursements to Date

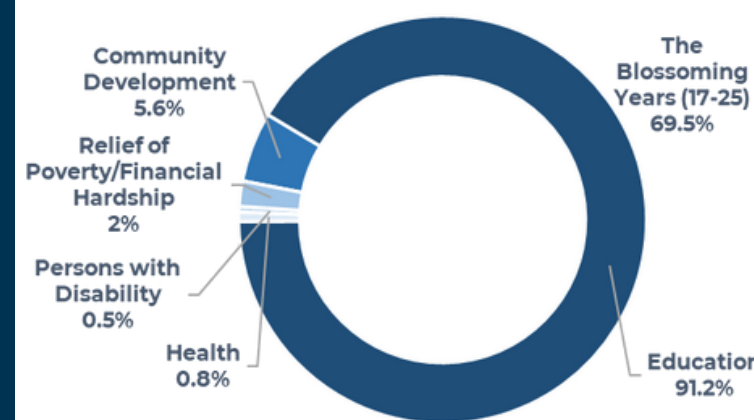


\$3.3M
disbursed in 2021

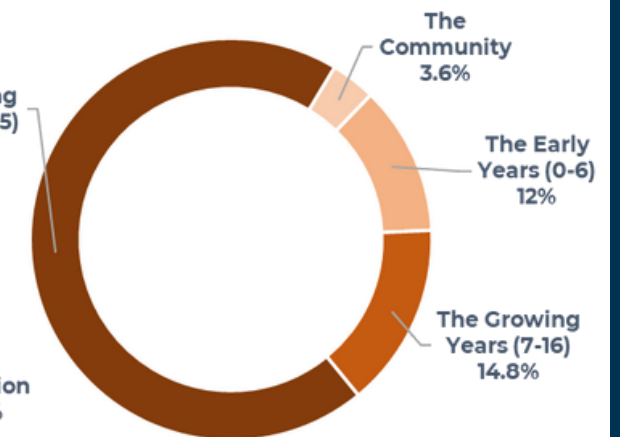
\$10.7M
disbursed to date

As part of our continuing efforts to equalise access to quality education and development opportunities, the bulk of our funds was directed towards tertiary access in 2021.

Causes Supported in 2021



Across Life Stages in 2021



Our Impact at a Glance



95

Families Supported



4,134

Children and Youths Supported



40

Partner Organisations

Board of Directors

The Board of Directors of the Foundation (the "Board") comprises of 7 Directors as at the end of the financial year.

Name and Designation	Date First Appointed to Board	Key Directorships and Appointments (as at 31 Dec 2021)
Lee Yin Chao CHAIRPERSON (appointed 13 Aug 2018)	01 Jan 2018	Director, Quantos Capital
Claire Chua DIRECTOR	01 Jul 2019	Director, Quantedge Advancement Initiative
Kuek Yu Chuang DIRECTOR	26 Aug 2015	Vice President, International Business, IQIYI Inc
Lim Whey Yit, Tony DIRECTOR	26 Aug 2015	Cluster Director - Resilience & Cybersecurity Director, Competition & Market Access, Infocomm Media Development Authority Director, Every Nation Church Singapore
Ng Jui Kwang, Jason DIRECTOR	26 Aug 2015	Vice President, Strategic Partnerships, Garena Online
Thevendran Senkodan DIRECTOR	26 Aug 2015	Director, Business Operations, LinkedIn
Suhaimi Zainul-Abidin DIRECTOR	26 Aug 2015	Chief Executive Officer, Quantedge Capital Director, National Volunteer and Philanthropy Centre Director, National Environment Agency Director, Skillsfuture Singapore Agency Council Member, Council for Board Diversity

All Board Directors do not receive any remuneration.

Board Meetings

The Board met once during the financial period from 1 January 2021 to 31 Dec 2021, on 19 May 2021. All Board members were present for the meeting. In addition, Board members attended regular informal discussions with Advisors and staff and were updated on ongoing Foundation matters through quarterly reports and emails.

The Programmes & Services Committee of the Board met quarterly. Board Committee members and Advisors in attendance reviewed the Foundation's charitable activities and programmes, and guided the QFS team on the development of new programmes and grants.

Board Committees

Board Committees and Roles

The Board has formed three Board Sub-Committees to give focus to the areas of Audit & Risk, Human Resource and Programmes & Services. Each Committee has its own terms of reference, roles and responsibilities that are approved by the Board, summarised on pages 29-30.

Committee	Name	Designation
Audit and Risk	Suhaimi Zainul-Abidin	Chairperson
	KS Leow	Member
	Thevendran Senkodan	Member
Human Resource	Suhaimi Zainul-Abidin	Chairperson
	CT Chua	Member
	KS Leow	Member
Programmes and Services	Claire Chua	Chairperson
	Lee Yin Chao	Member
	Suhaimi Zainul-Abidin	Member
	CT Chua	Member

Treasurer

The Board shall appoint any one of the Directors to act as Treasurer. The terms of reference for the Treasurer are summarised on page 30.

Lee Yin Chao has been the appointed Treasurer since 1 Jul 2019.

Our Team



Suraj Somaiah
Analyst, Programmes



Lim Feng Ling
Head, Programmes

Lim Feng Ling has been appointed as Head of Programmes since Jan 2021. Prior to this, she was the Manager of Programmes from Aug 2018 to Dec 2020.



Yong Ying Xin
Analyst, Programmes

THE EARLY YEARS

In a child's formative years, the surrounding environment and lived experiences play a defining role in the child's development.

We support programmes that improve care and support for children from disadvantaged backgrounds across the physical, cognitive, social and emotional domains, to give them a more equal start and a stronger foundation that can increase their chances of success later in life.

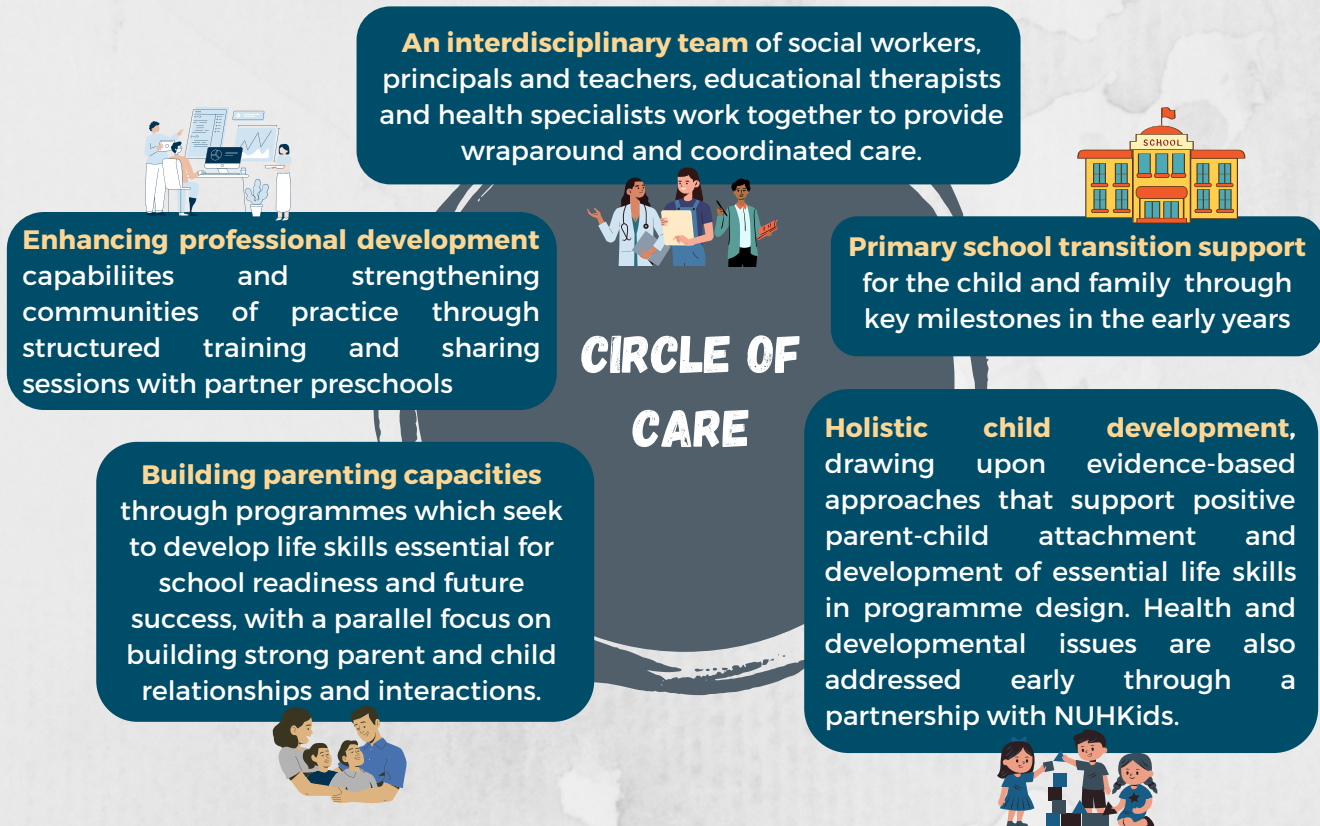


Circle of Care

A Circle of Care, A Lifetime of Difference

The Circle of Care programme is a preschool-based early intervention and preventive programme that adopts a holistic and integrated approach to foster a conducive environment in partner preschools for at-risk children from low socio-economic backgrounds. Through an integrated network of support, Circle of Care strives to close the achievement and opportunity gaps that these children face, enabling them to flourish and achieve their full potential.

Circle of Care brings together an interdisciplinary team to provide wraparound and coordinated care for the children and their families.

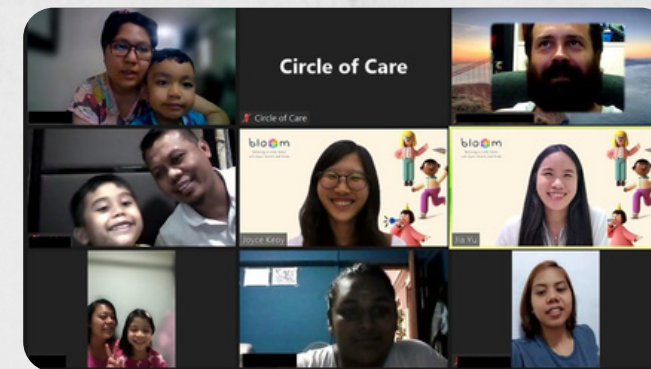


2021 saw Circle of Care deepen its collaborations with existing preschools and forge new partnerships to expand the network of support and extend the impact of the programme to more children. The team onboarded new preschools and extended its sharing sessions on its early childhood social work model as part of partnerships with Ministry of Education (MOE) Kindergarten, PAP Community Foundation, NTUC First Campus and Persatuan Pemudi Islam Singapura (PPIS).

Circle of Care was also appointed by KidSTART Singapore Limited to provide consultancy services to enhance and support the implementation of the nationwide scale-up of the KidSTART model¹. This involved building manpower capabilities of KidSTART staff as well as conversations with policymakers on the direction of child development support in Singapore. The goal of the partnership was to foster cross-sector collaboration in offering a holistic set of interventions to children aged 0-6 from low-income families to positively impact and improve child outcomes.

¹KidSTART provides upstream support to children aged 0 to 6 years old from low-income families and deepen partnerships between the community and Government to give these children a good start in life.

Amidst the challenges posed by Covid-19, Circle of Care continued to leverage parents' and caregivers' existing strengths to build their capacity and competency in supporting their children's overall development through relevant online resources and family coaching sessions. These resources helped parents to hold meaningful conversations with their children at key milestones, such as their transition from preschool to Primary 1. Online workshops and family coaching sessions also equipped parents and caregivers with strategies, games and routine-based activities to develop valuable life skills (e.g., taking on challenges, perspective taking, self-control) in their children.



COC's online workshops

7 ESSENTIAL Life Skills

- 1 FOCUS & SELF CONTROL**
This is crucial in achieving goals, by overcoming/avoiding distractions and information overload. It includes paying attention, remembering the rules, exercising self control and thinking flexibility.
- 2 PERSPECTIVE TAKING**
Understanding what others think and feel forms the basis for understanding the intention for others.
- 3 COMMUNICATING**
Determining what one wants to communicate and realizing how it will be understood by others.
- 4 MAKING CONNECTIONS**
Putting information into categories- figuring out what's the same and what's different; seeing how one thing relates to or represents something else; and finding unusual connections.
- 5 CRITICAL THINKING**
The ongoing search for valid and reliable knowledge to guide beliefs, decisions and actions.
- 6 TAKING ON CHALLENGES**
Being resilient in the face of stress, trying new experiences, being proactive in rising up to difficulties.
- 7 SELF-DIRECTED, ENGAGED LEARNING**
Remaining a seeker of knowledge and skills.

Why promoting life skills in children is important
Ellen Galinsky worked with many researchers who study children's learning and development. From her research, she developed the Making (MITM), a framework of the 7 essential life skills. These 7 essential life skills are crucial for children's success in school and in life, as they help in emotional regulation, academics, developing friendships and more!

Importance of Parental Involvement
Children are born engaged in learning, but this engagement fades for many of them. Parents play a key role in the stimulation and building of life skills in children as children cannot build them on their own. Parents are significant adults in the children's lives who have the ability to influence the home environment and growing up years.

COC
CIRCLE OF CARE

Materials provided to the parents

Since 2018, Quantedge Foundation has been co-funding Phase 3 of Circle of Care with Lien Foundation and Care Corner Singapore. Phase 3 targets children from birth to 9 years and is expected to expand its reach from 10 preschools and 2 primary schools in 2018 to 30 preschools and 7 primary schools by 2023.

Outcomes of Circle of Care in 2021

- **Expanded reach and forged new partnerships** across 3 geographical clusters → 19 partner preschools, 5 partner primary schools and 506 total children
- **Improved literacy outcomes** for 26 K1 and 48 K2 children → Phonological awareness: 88% of K1s, 94% of K2s
Sight words: 88% of K1s, 92% of K2s
- **Improved numeracy outcomes** for 28 K1 and 51 K2 children → Numeracy skills: 100% of K1s, 94% of K2s
- **Deepened cross-sector collaboration and knowledge sharing** through webinars, consultancy services and coaching to educators and social service professionals.

THE GROWING YEARS

It takes a village to raise a child. A caring community, in school or in the neighbourhood, plays a pivotal role in the growth and development of children from disadvantaged backgrounds, who often return to empty homes with little or no adult supervision after school.

We support programmes that improve low-income students' access to high quality, transformative opportunities, while supporting their social and emotional development to enable them to thrive academically and socially.



Raffles Scholarship Series

Maintaining Accessibility, Maximising Potential

Since 2015, Quantedge Foundation has partnered with Raffles Institution (RI) to co-fund and further develop the Raffles Scholarship Series (RSS), an integrated needs-based merit scholarship to encourage promising students to pursue and participate in the full range of developmental and exposure opportunities available through a Rafflesian education.

Under the RSS, high-performing, financially deserving Primary 5 and 6 students from any primary school receive scholarships of S\$1,000 and are mentored by RI students as a form of financial and peer support to make the most of their educational journey in RI.

Year 1 to 6 scholarships complement the Ministry of Education's Independent School Bursary scheme and UPLIFT Scholarship to provide RI students from financially humble backgrounds with additional cash awards to cover their out-of-pocket school expenses. Coupled with mentoring by seniors and guidance by the school, the additional support enables these students to participate fully in the whole range of development programmes, co-curricular activities and exposure trips available through a Rafflesian education.

“ Studying in a prestigious school like Raffles Institution had been a fantasy while I was in primary school, knowing that my family could not afford the school fees. But, with the help of the Independent School Bursary and [the Raffles Scholarship Series], such fantasy has become a reality. ”

Year 1 recipient of the RSS, 2021

“ I have committed myself to two CCAs and am participating in the International Geography Olympiad, and over the remaining half of the year, I am expecting my schedule to be quite hectic. Although challenging, I am looking forward to pushing myself and gaining new experiences and memories along the way. ”

Year 5 recipient of the RSS, 2021

Outcomes of Quantedge Foundation's support towards the Raffles Scholarship Series

Since 2015:

- About \$1,420,000 of scholarship monies have been disbursed by the Foundation, supporting 2,034 (out of a total of 3,143) students under the RSS.
- Over the years, there has been a gradual, steady increase in the number of Primary 5-6 students supported under the initiative who eventually enrol in RI.

In the longer term, the initiative hopes to increase accessibility and the socio-economic diversity of the student population in RI, to maintain RI as an inclusive and socially diverse institution with a vibrant learning environment for talented youths from all walks of life.

Integrated Care Programme

It Takes a Village to Raise a Child

The Integrated Care Programme (ICP) is a collaborative, multi-stakeholder initiative that delivers child-centric, wraparound care to vulnerable primary school children and their families across a spectrum of needs. It leverages the distinct yet complementary strengths of community stakeholders to provide targeted interventions, help schemes and programmes that help nurture these children into confident and resilient individuals.

THE ICP MODEL

Students are screened by trained teachers or school counsellors to identify those who may need additional support.



After-school programmes coordinated by SWCDC and run by SHINE and The Singapore Scout Association are tailored to build self-confidence, resilience, promote family bonding and a sense of community.



A school social worker from SHINE bridges resources from the school, social services and the wider community, to recommend appropriate services based on assessed needs.

From 2019 to 2021, Quantedge Foundation supported the replication of the Integrated Care Programme in the South West Community Development Council district, as a proof of concept for the programme's scalability.

ICP@SW demonstrated the effectiveness of the ICP model in providing holistic support to 170 at-risk children and 28 families, achieving key outcomes across the following domains:

96.2%

(52 out of 53)

of students passed PSLE

97%

reduction in the level of needs/risk of the families under case management

71.4%

reduction in the level of needs/risk of the students under the programme

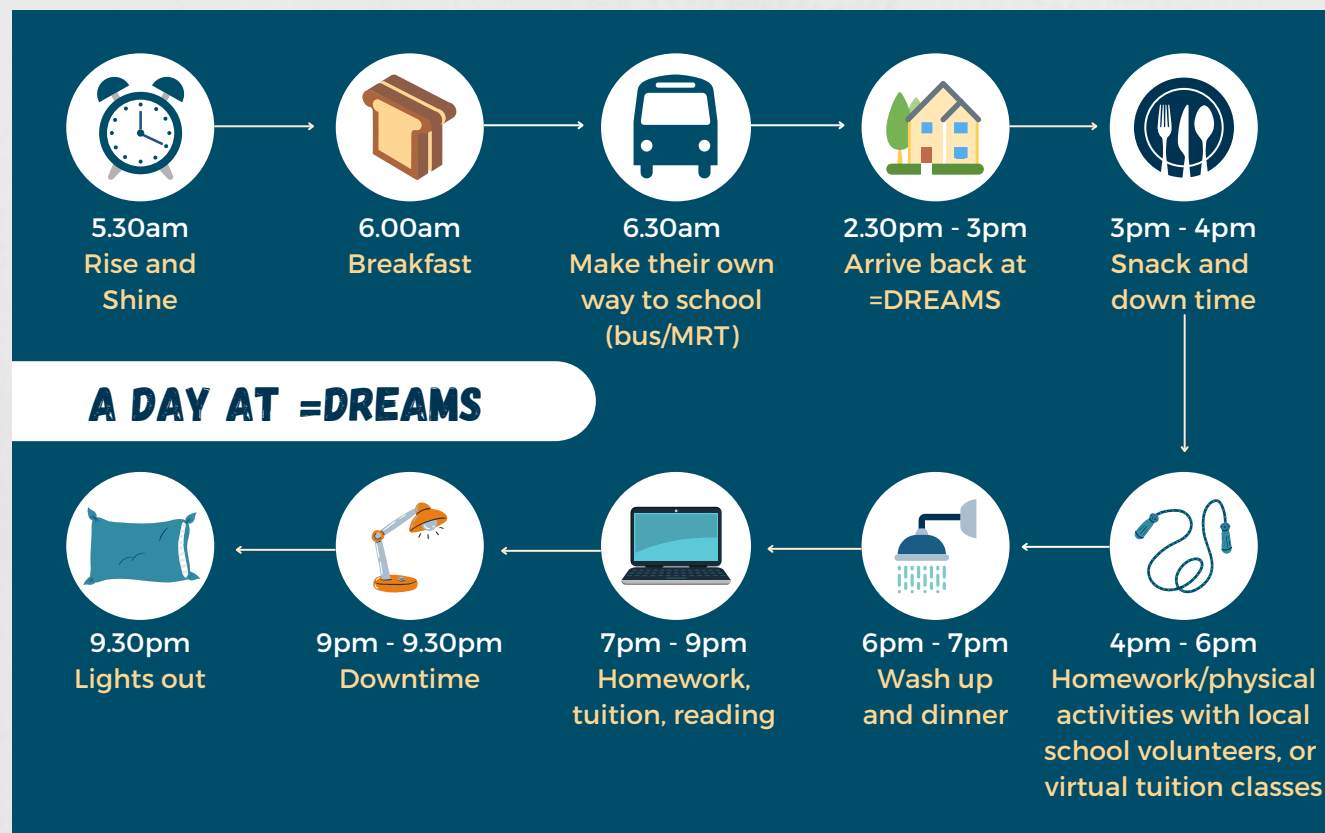
=DREAMS

With Equal Opportunities Comes Endless Possibilities

=DREAMS is a first-of-its kind secular, co-ed weekday residential initiative that provides after-school education and holistic support. Similar to boarding schools attended by students from families with means, =DREAMS aspires to create a child-centric system of care that empowers promising children from rental flat communities to dream of a future where they are not limited by family circumstances.

Children of families living in public rental housing communities, some of whom are 2nd or 3rd generation occupants of public rental homes, grow up in more challenging environments than their peers at school and inherit some of the challenges their parents face. Without additional support, including help for their care and holistic development, they risk becoming entrenched in a cycle of intergenerational poverty.

Under this initiative, children aged 13 years old and above from rental flat communities will be supported for up to 6 years, from Secondary 1 to Pre-tertiary level. A home-away-from-home during the school days, children can look forward to after-school academic and holistic support at the boarding facility. This includes differentiated, age-appropriate programmes ranging from coding classes, eco-citizenship cultivation lessons, to leadership and critical-thinking training, incorporated into their term schedules or offered during breaks.



=DREAMS is scheduled to welcome its first intake of students in early 2023. It targets to house 80 residents from the first year's intake and 40 in each subsequent year, reaching a full-term target of 240 residents by the 5th year.

Recognising that it takes a village to raise a child, =DREAMS adopts an inclusive approach towards creating sustainable support through collaborating with different stakeholders such as parents, schools and community partners.



Quantedge Foundation is excited to be embarking on a partnership with =DREAMS to provide wraparound after-school support for these students so that they have an opportunity to dream big and realise their aspirations.



The =DREAMS facade (artist's impression)

Mayor Mohd Fahmi bin Aliman at the launch event of the =DREAMS building

Desired outcomes of =DREAMS

- Nurture children from low-income families to succeed by discovering their assets and realising their aspirations.
- Support socio-emotional development of the children, including improved self-concept, increased peer acceptance and empathy for others.
- Empower these children to complete tertiary education and enable their families to exit social welfare assistance, thereby breaking out of the poverty cycle in the longer term.

Tak Takut Kids Club

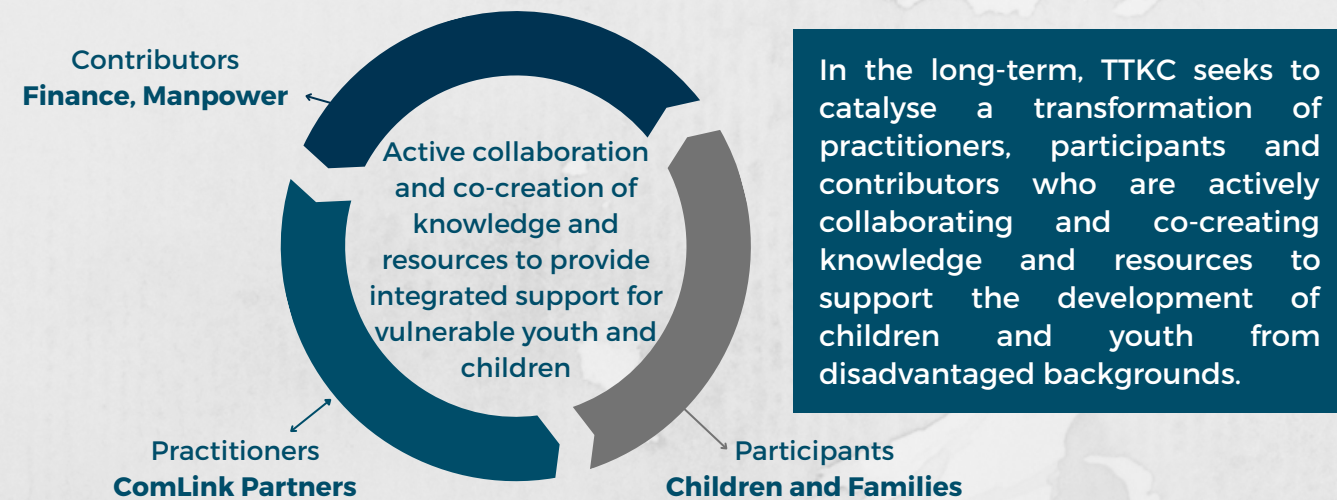
Transforming the Community Through Art & Creativity

Tak Takut Kids Club (“TTKC”) is a pilot model of engagement which aims to develop an organic and resilient community support system for children and youth from rental households to develop into confident individuals.

In partnership with Jurong West ComLink, 3Pumpkins has been running the TTKC pilot to engage children and youth at Boon Lay Drive, especially those living in rental flat communities. TTKC complements ComLink’s efforts to better coordinate community work and social services in providing integrated support, and offers a paradigm shift in purposefully building trusting relationships as the foundation to encourage positive self-identity and community belonging.



Through an open space concept that facilitates activities according to the needs on the ground, TTKC welcomes children and youth aged 7 to 16 in the neighbourhood to visit and engage in arts, freestyle play, games, sports and craft. This creates an inclusive and safe space where they can express and discover themselves as well as connect and learn from one another.



Quantedge Foundation is committed to supporting TTKC’s implementation of a pilot community model of engagement from 2021 to 2024, as a proof of concept for the initiative’s scalability.

Outcomes of Tak Takut Kids Club

Since Aug 2021, TTKC has achieved the following outcomes:

- Engaged 110 children and youth, 51 parents/caregivers and 180 residents
- 96% of children reported that TTKC helped them to develop a positive sense of self and feel a sense of belonging in the community
- Advanced multi-disciplinary and cross-sector collaboration and knowledge sharing across 25 community partners to provide integrated support

Study Buddy @ Marsiling ComLink

A Home Away from Home

Study Buddy by CampusImpact at Marsiling ComLink is a pilot programme which seeks to provide children and youth from rental flat communities a safe, nurturing and empowering space where they are supported in their studies, can develop important life skills and discover their strengths.

Under this programme, children and youths from rental flat communities have access to holistic wrap-around care, education and development opportunities, to enable them to achieve their full potential. Apart from academic guidance, the programme places a strong focus on the development of the children and youths’ socio-emotional competencies. This is done through a values-based curriculum that offers experiential learning and builds their self-awareness, relational skills and sense of purpose.

CampusImpact adopts a CARE approach in ensuring that the needs of these children and youths are met with targeted interventions.



The programme also seeks to empower their families by better understanding their needs and aspirations through frequent home visits. As a part of ComLink, it connects them to the services and resources pooled by government agencies, corporates and community partners who can provide the relevant support.

Quantedge Foundation shares CampusImpact’s belief in creating a safe, nurturing and empowering space for these children to achieve their full potential, and is supporting the Study Buddy pilot programme at Marsiling ComLink from Apr 2021 to Apr 2022.

Outcomes of Study Buddy

Since its launch in April 2021,

- 22 children and youths have been supported and observed to demonstrate improvements in participation, engagement and pro-social behaviours, based on feedback reported by their parents.
- 16 families have been supported through referrals to ComLink for further assistance across areas such as financial assistance, remote learning and family support.

THE BLOSSOMING YEARS

For youths from less privileged backgrounds, access to quality tertiary education is key to closing the education gap, improving their potential lifetime earnings and enabling upward social mobility for them and their families.

We support programmes that improve tertiary education access, affordability and achievement for low-income students.



University Access

Equalising Access Through a Needs-Blind University Education

Quantedge Foundation has been supporting commitments made by the Singapore Management University (SMU), the Singapore University of Technology and Design (SUTD) and the National University of Singapore (NUS), to guarantee full financial aid to all Singaporean youths with the greatest financial need. The upfront guarantee helps to remove financial considerations from these student's enrolment decisions, so that they do not enter the workforce prematurely.

Under the University Access initiatives, our university partners guarantee that all Singaporean students with demonstrated financial need receive a financial package equivalent to at least 100% of their tuition fees, over the entire duration of their undergraduate education.

Eligibility for the initiatives differ slightly across the universities but are based solely on the student's household economic circumstances. There is no quota on the number of recipients awarded or bonds.

Through the University Access initiatives, we hope to encourage talented students to pursue their dreams at university, while lightening the financial burden on their families, improving life outcomes and enabling long-term upward social mobility.



The Quantedge Foundation Scholarship allowed me to better concentrate on my studies and contribute back to my school via multiple leadership roles in executive and management student committees.

It also gave me a chance to take up internships during my summer breaks and focus on learning to my fullest. This included an internship at Amazon Web Services during my final year, which got converted into my current full-time role.



Valerie Leong
AY2017/18 QF Scholar



As a recipient of the QF-SEOG, I have been able to focus on my studies and participate in many extra-curricular activities including Table Tennis, Badminton and Volleyball. While I may not have been good at all these sports, the welcoming culture at SUTD gave me a chance to try them out.

My time at SUTD has also provided me with great opportunities to meet new people and build lifelong friendships. These experiences cannot easily be found elsewhere.



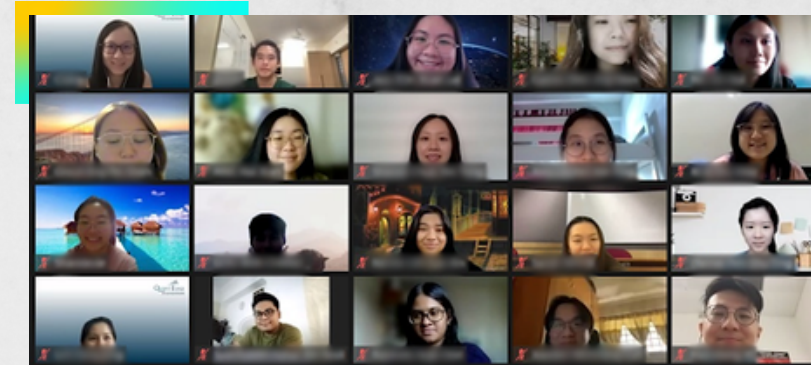
Zovin Yeo
AY2021/22 QF-SEOG Recipient

SMU Access

In 2017, Quantedge Foundation partnered with SMU to seed-fund the SMU Access initiative. The first of its kind by any university in Singapore, the SMU Access initiative guarantees that all Singaporean students with the greatest financial need receive full financial aid that will cover the tuition fees for their entire undergraduate education.

Under the SMU Access Initiative, the Quantedge Foundation Scholarship supports, in perpetuity, 20-25 new students annually for up to 4 years, or 80-100 students at any given year. Beyond full coverage of the students' tuition fees, the Quantedge Foundation Scholarship also provides students with additional financial support to defray their living costs and/or out-of-pocket expenses.

Since 2017, SMU Access has empowered 140 students, of which 100 received Quantedge Foundation scholarships. As of 2021, 25 Quantedge Foundation scholars have graduated and secured full-time employment. Majority of the scholars, many of whom are first-generation degree recipients, have expressed feeling empowered by the initiative and motivated to pursue their career aspirations, ranging from across technology, finance, consulting and marketing sectors.



Joint online welcome session for the AY2021/2022 batch of scholars/recipients from SMU and SUTD



Catch-up sessions with the scholars/recipients' over their term break

SUTD Education Opportunity Grant

The SUTD Education Opportunity Grant (SEOG) provides tiered grants to help students from financially disadvantaged backgrounds pursue their studies at SUTD. In 2020, Quantedge Foundation seed-funded SUTD's commitment to enhance the existing coverage of the SEOG, to guarantee full financial aid to all Singaporean students who fall under the neediest tier.

The Quantedge Foundation - SEOG supports, in perpetuity, up to 8 new students annually with full financial aid for up to 4 years, or 32 students in any given year. Beyond the tuition fees, the initiative also guarantees that the costs of hostel fees for mandatory on-campus stay during the students' Freshmore terms will be fully covered.

In 2021, we welcomed our second batch of QF-SEOG recipients, doubling the total number of students empowered by the initiative to date. The financial support provided has enabled these students to explore and fully embrace their interests across the wide range of academic programmes, extra-curricular and other developmental opportunities available at SUTD.

NUS Enhanced Financial Aid Scheme

As part of our continuing push to promote inclusive and equitable quality education, Quantedge Foundation partnered with NUS in 2021 to seed-fund the University's commitment to guarantee deserving students a financial package equal to 100% of their tuition fees and additional financial support for living expenses, on-campus stay and overseas exposure.

With the certainty of additional financial support, eligible students are assured of a transformative, vibrant and fulfilling university experience at NUS.

“ While students from low-income backgrounds may already receive financial assistance from various sources, the funding they receive may not cover all of their university costs. Some students may also shy away from study abroad as well as residential programmes due to financial constraints.

The new Enhanced Financial Aid Scheme will fill the financial gap for students who are most in need of support. It provides additional funding to Singaporean students from low-income backgrounds on two fronts: by fully funding tuition fees and covering part of their living expenses; and enabling access to a more well-rounded and richer university experience that would include an on-campus stay and overseas exposure.

Professor Tan Eng Chye, NUS President



NUS President Prof Tan Eng Chye (left) with Quantedge Foundation Board member Mr Suhaimi Zainul-Abidin (centre) and NUS Senior Deputy President and Provost Prof Ho Teck Hua (right)

Outcomes of NUS Enhanced Financial Aid Scheme

Under this initiative, NUS is committed to disbursing an additional S\$15 million per year in financial assistance to benefit about 3,300 students from low-income backgrounds.

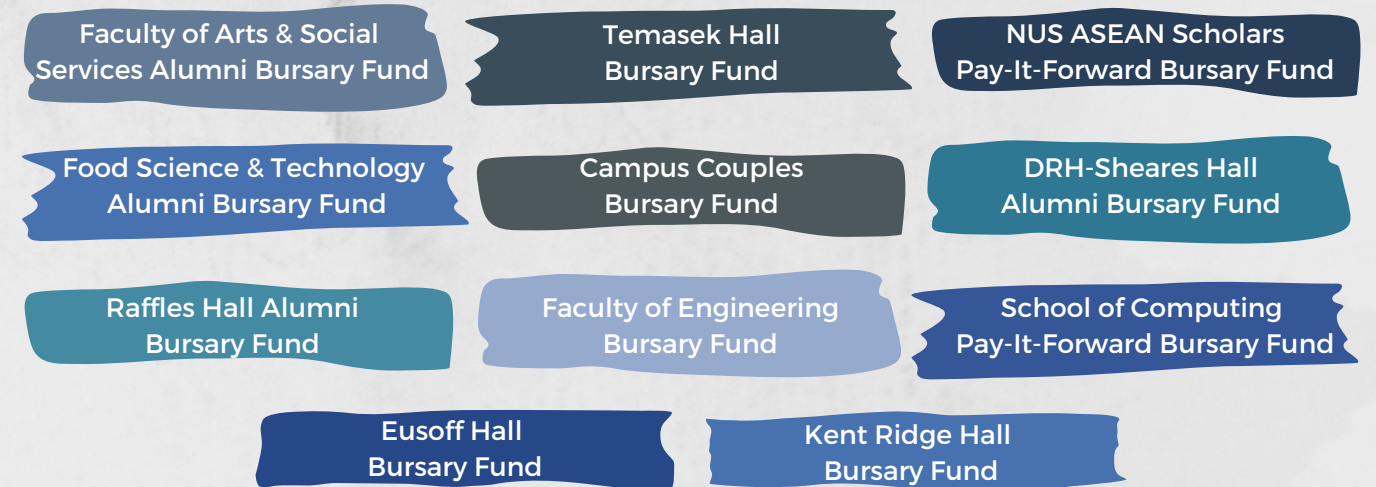
The Quantedge Foundation Award will support, in perpetuity, up to 8 new students annually or 32 students, in any given year.

NUS Bursary Endowment Funds

The NUS Enhanced Financial Aid Scheme also marks a strengthened partnership between Quantedge Foundation and NUS.

Since 2016, we have supported several Bursary Endowment Funds administered by NUS to enable financially disadvantaged students to benefit more fully from their university experience. The endowments provide the various schools, colleges and/or faculties within NUS with a perpetual and self-sustaining source of funding, to provide deserving students with continued opportunities to benefit from value-added experiential learning programmes and immerse themselves fully in the residential college experience.

To date, this has provided financial support to 37 students through the following 11 bursary endowment funds:



Our Programmes in the News

=DREAMS

- "S'pore charity takes new approach to help children from poor families achieve their dreams", 3 Jan 2022, The Straits Times

Circle of Care

- "Circle of Care scheme helps track needy kids' health, development", 25 Feb 2021, The Straits Times
- "调查：寻求医疗服务阻碍多 低收入家庭孩童较难按时复诊治疗", 24 Feb 2021, Lianhe Zaobao
- "Kanak-kanak dari keluarga bergaji rendah miliki tabiat kesihatan lemah: Kajian NUH", 23 Feb 2021, Berita
- "Intervention programme has positive impact on children from low-income families in Singapore, study finds", 23 Feb 2021, The Straits Times
- "Experts call for more help for low-income families to meet kids' developmental and health needs", 23 Feb 2021, The Straits Times
- "Integrated healthcare model key to improving preschoolers' quality of life: Study", 23 Feb 2021, Channel NewsAsia
- "狮城有约 | 十分访谈：弱势孩童支援网络", 23 Feb 2021, Channel8 News
- "调查发现：低收入家庭儿童的健康较常被忽略", 23 Feb 2021, Channel8 News

NUS Enhanced Financial Aid Scheme

- "Helping less privileged students financially goes beyond dollars and cents", 9 Feb 2022, The Straits Times
- "About 3,300 needy undergraduates set to benefit as NUS ramps up financial aid", 8 Feb 2022, The Straits Times

Study Buddy @ Marsiling ComLink

- "新闻 新加坡 社区联系站增益活动 减轻多子女家长压力", 25 Mar 2022, Lianhe Zaobao

SMU Access

- "新大经济援助计划资助学费 助低收入家庭学生圆大学梦", 10 Mar 2021, Lianhe Zaobao

Tak Takut Kids Club

- "Causes Week 2021: Boon Lay kids transform their community through art", 25 Dec 2021, The Straits Times

Our Foundation in the News

"Newer foundations changing the face of philanthropy", The Straits Times, 14 Oct 2021



Scan the QR code to visit Quantedge Foundation's Publications and Newsroom webpage.