



QUANT EDGE
FOUNDATION
ANNUAL REPORT

20

20

TABLE OF CONTENTS

03	About Quantedge Foundation
04	Our Vision, Mission and Values
05	Chairperson's Message
06	Our Philanthropic Thrusts
07	Key Highlights
08	Board of Directors
09	Board Committees and Our Team
10	The Early Years
14	The Growing Years
22	The Blossoming Years
27	Our Programmes In the News



ABOUT QUANTEDGE FOUNDATION

Quantedge Foundation (Singapore) Ltd (“the Foundation”) was incorporated in Singapore on 26 August 2015 as a Company Limited by Guarantee and registered as a Charity on 15 January 2016. It has been an approved Institution of a Public Character since 17 February 2016.

Company Registration Number (UEN)

201532866G

Registered Address

20 McCallum Street
15th Floor, Tokio Marine Centre
Singapore 069046

Banker

DBS Bank Ltd.
Standard Chartered Bank (Singapore) Ltd

Auditor

PricewaterhouseCoopers LLP

Corporate Secretary

Allen & Gledhill LLP

OUR VISION, MISSION AND VALUES

Vision

UNEQUAL CIRCUMSTANCES | EQUAL OPPORTUNITY

A more inclusive and resilient society, where everyone has equal access to transformational opportunities that enable them to achieve their full potential.

Mission

We seek to deliver impactful solutions to a broad range of social challenges in Singapore by designing and/or funding innovative programmes that:

Transform Lives

Improving the access of children and youth from disadvantaged backgrounds to quality care, education and developmental opportunities, to help them unlock their potential, fulfil their dreams and build a better future for their families and themselves.

Empower Communities

Strengthening the capacities of vulnerable communities, facilitating community ownership and action, to sustain change and build an inclusive, resilient society.

Catalyse Change

Spearheading new approaches and leveraging strategic networks, research and technology, to raise awareness and galvanise change across the sector.

Core Values



Impact

We aspire to do good better. We seek effective solutions that address the root causes and have measurable, sustainable outcomes.



Innovation

We look for bold ideas and novel approaches to solving the problems of today and are prepared to make long-term social investments for a better tomorrow.



Collaboration

We work with the community and partner organisations, leveraging their wisdom and resources to achieve shared objectives and amplify our collective impact.



Inclusion

We respect differences in individuals and believe that we can harness the diversity of collective experiences, perspectives and opinions for greater impact.



Integrity

We hold ourselves and our partners accountable to high standards of organisational integrity and responsible stewardship.

CHAIRPERSON'S MESSAGE



2020 was a challenging but significant year for us as we took concrete steps towards strengthening our commitment to build a more inclusive and resilient society.

The year saw many struggles and setbacks, particularly for those from disadvantaged and vulnerable communities who were hit hardest by the COVID-19 pandemic. Yet, it also saw many stakeholders within the social service ecosystem demonstrate adaptability and an unwavering commitment in continuing to support those most in need. During the circuit breaker period, we helped catalyse the Keeping Learning Alive initiative, a multi-stakeholder collective effort that provided continued engagement and learning support for vulnerable primary school children. Through efforts like this, we hope to continue equalising access to transformational opportunities that enable disadvantaged children and youth to achieve their full potential.

While children and youth from disadvantaged backgrounds can still do well in life, they face greater challenges. The odds of them breaking out of their circumstances are simply smaller. We may not be able to eliminate these gaps entirely, but a fair-functioning society needs to be mindful of the gap and strive to reduce the differences in opportunity sets. The Infinity Programme is one initiative that sought to achieve this by expanding the developmental opportunities available to children living in rental flats through holistic wraparound care and enrichment programmes.

We believe education to be a great social leveller. This underpins our emphasis on projects that broaden education access. In 2017, we co-designed and seed-funded SMU Access to help provide a guarantee that all incoming Singapore Management University (SMU) students with the greatest financial need would receive a tuition-free university education. Last year, several students from the first batch of SMU Access graduated. The year also saw the beginning of our partnership with Singapore University of Technology and Design (SUTD) in providing a similar guarantee under the SUTD Education Opportunity Grant. We feel strongly that anyone who aspires to pursue further education should never be deprived the opportunity to do so on the basis of their financial situation. We are committed to turning this into a reality and believe that in time, all universities will step up to do the same.

Looking forward, we will continue deepening our impact by expanding our existing programmes, designing new, innovative, and impactful approaches, and galvanizing support for meaningful social change. Through this, we hope to achieve our vision and mission and better enable upward social mobility in Singapore.

Lee Yin Chao

Lee Yin Chao
Chairperson

OUR PHILANTHROPIC THRUSTS

We curate, design and fund programmes or research to uncover, understand and address the root causes of key social challenges in Singapore. We collaborate with like-minded partners to pilot innovative and scalable approaches that could bring about long-term, sustainable changes to the social sector

In particular, we care deeply about creating and enabling access to opportunities for children and youth from less privileged backgrounds to do well in life. The programmes that we have designed or support span across the different age groups.

The Early Years (0-6 years)

- Circle of Care



The Growing Years (7-16 years)

- Raffles Scholarship Series
- Integrated Care Programme @ Southwest
- Infinity Programme
- Keeping Learning Alive

The Blossoming Years (17-25 years)

- SMU Access
- SUTD Education Opportunity Grant
- NUS Bursary Endowment Funds



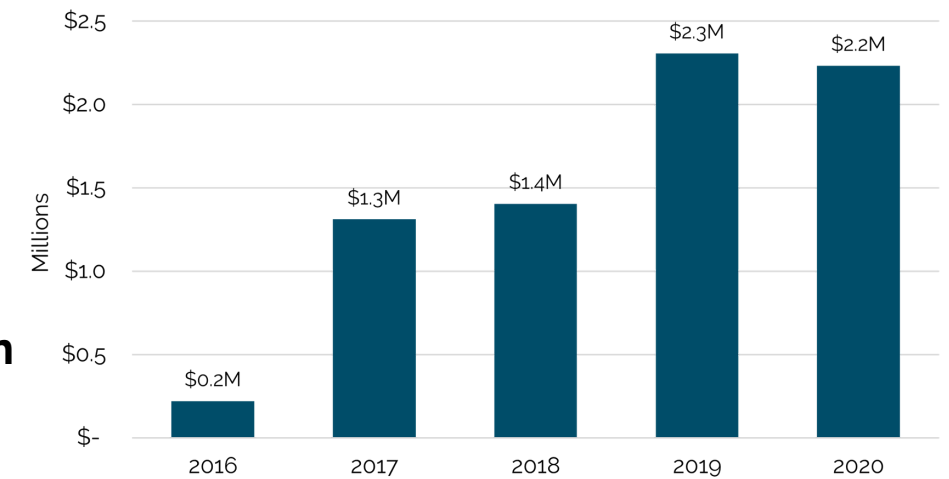
KEY HIGHLIGHTS

\$7.4 Million

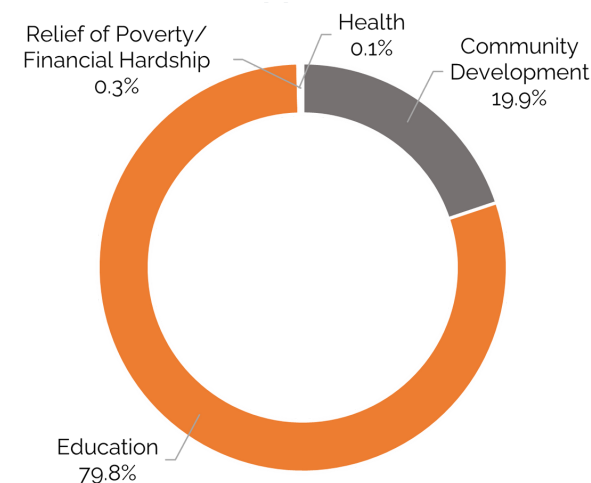
Disbursed to date

\$2.2 Million
Disbursed in 2020

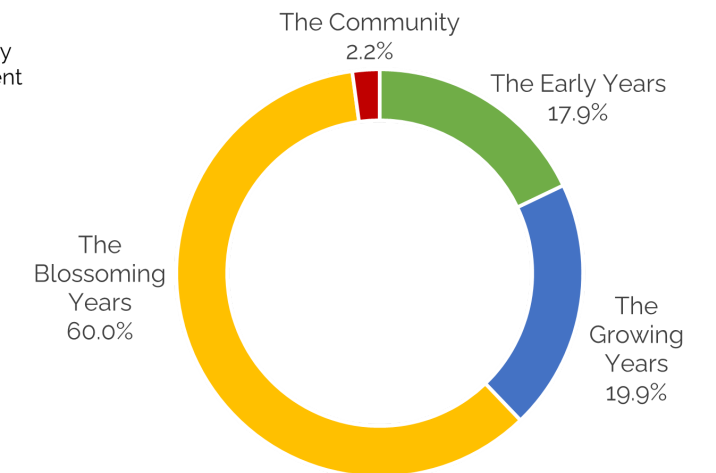
Grants Disbursed



Causes Supported in 2020



Across Life Stages in 2020



Our Impact at a Glance



4043

Children and Youths Supported

1298 new in FY2020



51

Partner Organisations

19 new in FY2020



12

Key Programmes Supported

3 new in FY2020

BOARD OF DIRECTORS

The Board of Directors of the Foundation (the "Board") comprises of 7 Directors as at the end of the financial year.

Name and Designation	Date 1st appointed to Board	Key Directorships & Appointments (as at 31 Dec 2020)
<u>Lee Yin Chao</u> CHAIRPERSON (appointed 13 Aug 2018)	01 Jan 2018	Senior Advisor, Quantedge Capital
<u>Claire Chua</u> DIRECTOR	01 Jul 2019	Director, Quantedge Advancement Initiative
<u>Kuek Yu Chuang</u> DIRECTOR	26 Aug 2015	Vice President, International Business, IQIYI Inc
<u>Lim Whey Yit, Tony</u> DIRECTOR	26 Aug 2015	Cluster Director- Resilience & Cybersecurity Director, Competition & Market Access, Infocomm Media Development Authority Director, Every Nation Church Singapore
<u>Ng Jui Kwang, Jason</u> DIRECTOR	26 Aug 2015	Vice President, Strategic Partnerships, Garena
<u>Thevendran Senkodan</u> DIRECTOR	26 Aug 2015	Director, Business Operations, LinkedIn
<u>Suhaimi Zainul-Abidin</u> DIRECTOR	26 Aug 2015	Chief Executive Officer, Quantedge Capital Director, National Volunteer and Philanthropy Centre Director, National Environment Agency Director, Skillsfuture Singapore Agency Council Member, Charity Council

All Board Directors do not receive any remuneration.

Board Meetings

The Board met once during the financial period from 1 January 2020 to 31 Dec 2020, on 20 May 2020.

Present:

Lee Yin Chao
Claire Chua
Kuek Yu Chuang
Lim Whey Yit, Tony
Ng Jui Kwang, Jason
Thevendran Senkodan
Suhaimi Zainul-Abidin

Absent:

NIL

In addition, Board members attended regular, informal discussions with Advisors and staff to share new perspectives and exchange ideas on ongoing Foundation matters. They are also updated on our activities, new programmes and grants through quarterly reports and emails.

BOARD COMMITTEES

Board Committees and Roles

The Board has formed three Board Sub-Committees to give focus to the areas of Audit & Risk, Human Resource and Programmes & Services. Each Committee has its own terms of reference, roles and responsibilities that are approved by the Board, detailed on page 28.

Committee	Name	Designation
Audit & Risk	Suhaimi Zainul-Abidin	Chairperson
	KS Leow	Member
	Thevendran Senkodan	Member
Human Resource	Suhaimi Zainul-Abidin	Chairperson
	CT Chua	Member
	KS Leow	Member
Programmes & Services	Claire Chua	Chairperson
	Lee Yin Chao	Member
	Suhaimi Zainul-Abidin	Member
	CT Chua	Member

Treasurer

The Board shall appoint any one of the Directors to act as Treasurer. The terms of reference for the Treasurer are detailed on page 29.

Lee Yin Chao has been the appointed Treasurer since 1 Jul 2019.

OUR TEAM



Lim Feng Ling
Head, Programmes

Lim Feng Ling has been appointed as the Head of Programmes in Jan 2021. Prior to this, she was the Manager of Programmes from Aug 2018 to Dec 2020.



Suraj Somaiah
Analyst, Programmes



Yong Ying Xin
Analyst, Programmes
(Appointed 1 Jan 2021)

THE EARLY YEARS

In a child's formative years, the surrounding environment and lived experiences play a defining role in the child's development.

We support programmes that improve care and support for children from disadvantaged backgrounds across the physical, cognitive, social and emotional domains, to give them a more equal start and a stronger foundation that can increase their chances of success later in life.



CIRCLE OF CARE

A Circle of Care, A Lifetime of Difference

The Circle of Care programme is an early intervention and preventive programme that adopts a holistic and integrated approach to create a conducive environment in partner pre-schools for at-risk children from low socio-economic backgrounds to flourish and achieve their potential.

Circle of Care combines the latest research in neuroscience, social work and early childhood to provide proactive services and integrated support for all children, including those with greater needs. It brings together an interdisciplinary team of educational therapists, health specialists, social workers, teachers and principals, to provide wraparound and coordinated care for the children and their families.



At-risk children may already be lagging behind their peers in terms of development. Through timely and early intervention, **Circle of Care** aims to close the achievement and opportunity gaps between these children and their peers.

From entering pre-school to transiting to primary school, the interdisciplinary team handholds the child and supports the family through key milestones in the child's early years.

Since 2018, Quantedge Foundation has been co-funding Phase 3 of Circle of Care with Lien Foundation and Care Corner Singapore. Phase 3 will target children from birth to 9 years and is expected to expand its reach from 10 pre-schools and 2 primary schools in 2018 to 30 pre-schools and 7 primary schools by 2023.

A heavy emphasis is placed on providing holistic support. Programmes are designed to help the child develop essential life skills, help parents build parenting capabilities and strengthen parent-child relationships. In addition, the team collaborates with National University Health Kids (NUHKids) to ensure early detection and treatment of health and development issues.

Adapting to changes

In the face of the challenges posed by COVID-19, the team adapted quickly to continue supporting children and their families. BLOOM workshops aimed at building crucial life skills and enhancing parent-child relationships were swiftly shifted online. Materials such as videos and newsletters were also developed to aid remote engagement, so as to continue providing the children with Primary School Transition Support.



Health Development and Screening Programme (HDSP)

A study¹ was launched in 2018 by the National University Hospital's Khoo Teck Puat-National University Children's Medical Institute.

The study found that children from low-income families:

- Had poorer quality of sleep than their peers, despite having more hours of it
- Had more screen time
- Had less outdoor activity time
- Had poorer dental health
- Had less healthy eating habits



However, the study has also shown that children served by **Circle of Care** and their parents significantly benefitted from the community health screening and health education efforts respectively. **Circle of Care's** place-based health models removed barriers to reaching the children who were hard to reach. Teachers and social workers also felt supported when they were able to bring children they were most worried about to the attention of health professionals.

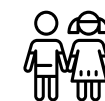
Outcomes of Circle of Care



Expanded reach and forged new partnerships



19 Partner Preschools
2 KCDP² Preschools
5 Partner Primary Schools



546 Total Members



3 Geographical Clusters



Measurable improvements in child Literacy and Numeracy skills



Parents better able to support their children through primary school transition



Deepened engagement with the community through Circle of Care Webinar Series for educators and social service professionals

[1] Source: A community-based holistic preventive healthcare model for children of low-income families in Singapore: A pilot study. Singapore Population Health Improvement Centre (SPHERIC) is seed funding the research under the Ministry of Health's National Medical Research Council grant.
[2] The KidStart-CoC Demo Project (KCDP) was a collaborative project between KidStart and Circle of Care that ran from Jun 2019 to Dec 2020, coordinating services offered by the respective programmes across four key domains: (i) social support, (ii) health, (iii) development and learning, and (iv) parent engagement.

THE GROWING YEARS

It takes a village to raise a child. A caring community, in school or in the neighbourhood, plays a pivotal role in the growth and development of children from disadvantaged backgrounds, who often return to empty homes with little or no adult supervision after school.

We support programmes that improve low-income students' access to high quality, transformative opportunities, while supporting their social and emotional development to enable them to thrive academically and socially.



RAFFLES SCHOLARSHIP SERIES

Enabling Accessibility, Stretching Potential

Since 2015, Quantedge Foundation has been partnering Raffles Institution (RI) to co-fund and further develop the Raffles Scholarship Series, to encourage promising students to keep the Raffles schools (RI and RGS) in their sights, and access the exposure and developmental opportunities offered through a Rafflesian education.



Under this initiative, high-performing, financially deserving Primary 5 and 6 students from any primary school receive scholarships of \$1,000. They are also mentored by RI students, who serve as role models for these children.

RI Year 1 to 6 Scholarships complement MOE's Independent School Bursary Scheme and UPLIFT Scholarship, giving RI students from humble backgrounds additional financial support to cover their out-of-pocket school

expenses. The additional support enables these students to participate fully in the whole range of developmental programmes, co-curricular activities and exposure trips at RI, together with their schoolmates.

Outcomes of Quantedge Foundation's support towards the Raffles Scholarship Series

Since 2015:

- About \$1,387,000 of scholarship monies has been disbursed by the Foundation
- 2001 (out of a total of 2682) students have been supported by the Foundation

In the longer term, this initiative aims to increase accessibility and the socio-economic diversity of the student population in RI, to maintain RI as an inclusive and socially diverse institution with a vibrant learning environment for talented youths from all walks of life.

INTEGRATED CARE PROGRAMME

It takes a Village to raise a Child

The Integrated Care Programme is a ground-up, multi-stakeholder initiative to deliver upstream, child-centric, wraparound and integrated care to vulnerable primary school children and their families across a spectrum of needs, in a targeted and sustainable manner.



As part of the **Integrated Care Programme**, students in partner primary schools are screened by trained teachers or school counsellors to identify those who may need additional support.

A school social worker from SHINE Children and Youth Services acts as a consistent touchpoint for these students and their families, bridging the school, social services and the wider community to recommend appropriate services to them based on their assessed needs.

South West Community Development Council coordinates community resources to meet those needs, supported by an integrated case management system. This includes after-school programmes by The Singapore Scout Association conducted both in school and the community to build the children's self-confidence and resilience, develop useful life skills, promote family bonding and foster a strong sense of community.

As of Sep 2020, New Life Community Services came on board as a programme partner to work with the low-risk/needs students identified under the programme.



Quantedge Foundation has been supporting the implementation of the Integrated Care Programme in the South West Community Development Council district (ICP@SW) from 2019 to 2021, as a proof of concept for the programme's scalability.

Outcomes of ICP@SW

Since 2019, ICP@SW has provided holistic support to an estimated 20 families and 114 children from two partner primary schools — Chua Chu Kang Primary School and Teck Whye Primary School. The key outcomes demonstrated include:

- Successful progression from primary school to secondary school
- Improved attendance, self-confidence and motivation levels of the students
- A reduction in the level of needs/risk of the families and children under case management
- Higher engagement of the community

INFINITY PROGRAMME

A Holistic Learning Approach in Education & Values

The Infinity Programme adopts a holistic approach to provide children from low-income families with wraparound care, as well as learning and developmental support across time, domains and key stakeholders in the children's lives.



We believe in empowering vulnerable communities and investing in the full potential of the next generation to achieve transformative changes for low-income families.

While all parents may have high educational aspirations for their children and

hope that they attain a better quality of life, some may be ill-equipped to guide or support their children in their school work. In addition, children from some low-income families may not have access to the same developmental opportunities as their peers and are more likely to fall

behind. South Central Community Family Service Centre (SCC) aims to support these students throughout their school-going years, with a particular focus on the Primary School Leaving Examination (PSLE) as a critical milestone for active intervention.

In 2020, Quantedge Foundation supported South Central Community Family Service Centre (SCC) in its education and learning support programmes for children from the 25 rental blocks that it serves. In partnership with KidsExcel, students were also supported through a values-driven, academic and sports enrichment programme.

Pass in Primary Six (PIPS)

In partnership with KidsExcel, the PIPS programme provides after-school academic support and sports enrichment that develops healthy minds, healthy bodies and strong character. The programme aims to nurture the physical, intellectual and social skills of children, giving them a timely boost in knowledge, skills and confidence nearing their PSLE milestone year. This would, in turn, open up more options and pathways for their secondary and tertiary journey.



On top of the PIPS programme, SCC provided additional support for P6 students:

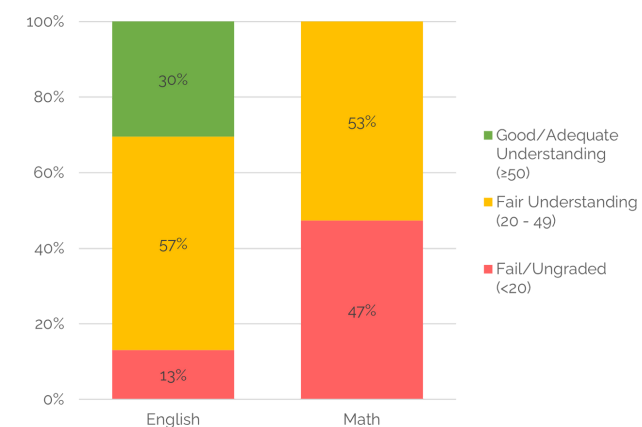
- Organised supplementary online math classes and matched students to learning support mentors for 1:1 mentoring on subjects that the students were weaker in (due to the COVID-19 home-based learning situation)
- Conducted home visits and online parent engagement workshops to understand the challenges that students faced and share practical tips with their parents
- Held motivational talks and presented improvement awards to encourage students
- Engaged Community mothers to provide healthy and nutritious home-cooked meals for the students before classes to ensure that their nutrition needs were met

Outcomes of Infinity Programme

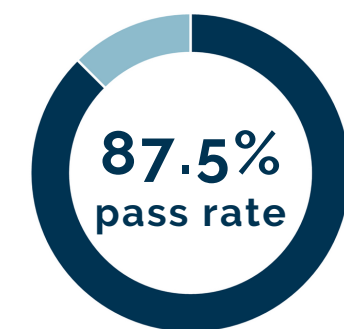
Most of the Infinity Programme's children were already struggling with their academics and facing multiple stressors at home. The COVID-19 pandemic introduced additional challenges and barriers to their learning. Many lacked a conducive learning environment, as well as the necessary IT/data infrastructure, parental resources and guidance for effective home-based learning. Nonetheless, with the support from SCC and KidsExcel, they demonstrated notable improvements in both their academic and behavioural outcomes.

Notable improvements in academics

Term 1 Review Results of P5 and P6 students



PSLE results of P6 students in 2020



Including 10 students who qualified for the Express and Normal Academic streams

Positive behavioural feedback from parents

- 85% Agreed or Strongly Agreed that their child is confident and willing to explore new challenges
- 96% Agreed or Strongly Agreed that their child is aware of how his or her actions affect others

KEEPING LEARNING ALIVE

In the face of the Pandemic

As Singapore battled COVID-19 with heightened safe distancing measures, Quantedge Foundation disbursed emergency grants to support urgent, equitable access to home-based learning for primary school children from underprivileged backgrounds.

Globally, learning had been significantly disrupted³

> 180 countries

had closed schools in an effort to contain the spread of the Coronavirus global pandemic (COVID-19)

> 91%

of the world's student population or some 1.5 billion learners had their learning disrupted

Quantedge Foundation was part of a collective effort to mobilise our respective resources and networks to provide timely digital connectivity to vulnerable primary school children, so that their learning could continue at home during the Circuit Breaker and while centre-based activities were suspended for most of 2020.

[3] Source: UNESCO Global Education Coalition (Figures as of Sep 2020)

There is growing consensus that the pandemic hits vulnerable communities worldwide the hardest, bringing economic and social disparities into sharper focus. In Singapore, as schools moved to full home-based learning and after-school support centres closed during the Circuit Breaker, the digital divide became more apparent. While necessary for public health and safety, these measures have had a disproportionate impact on underprivileged students. Some lack parental guidance or supervision, have poorer access to supplementary educational resources, as well as unequal technology access for remote learning. Over an extended period, these students are at risk of falling behind their peers.



Coordinated efforts to ensure digital accessibility

Our emergency grants catalysed a multi-stakeholder collective effort coordinated by an education social enterprise, Viva Kids, to keep learning alive for vulnerable children in Singapore.

Within 3 weeks, nearly 500 underprivileged primary school students on the MOE Financial Assistance Scheme across 12 community sites received personal learning tablet devices, as well as free mobile data connectivity for 6-8 months. This boost in last-mile digital connectivity enabled the students to keep up with their peers in the online home-based learning lessons assigned by their respective schools.



In addition, Viva Kids adapted its KidsExcel after-school programme to make its various academic resources available online for these students to reinforce their own learning while centre-based learning programmes remained suspended. The students were able to access differentiated worksheets, live lessons and an online homework help-desk.

Beyond the current COVID-19 situation, our effort to close the last mile ICT gap for underprivileged students is aligned with the national digital literacy initiative in Singapore to equip all Singaporean students with personal learning devices to enhance their learning experiences.



Outcomes of Keeping Learning Alive

- Uninterrupted learning during the Circuit Breaker and on home-based learning days post-Circuit Breaker
- Continued engagement and learning support for students, especially for those taking their milestone examinations
- Equitable access to free online educational resources



THE BLOSSOMING YEARS

For youths from less privileged backgrounds, access to quality tertiary education is key to closing the education gap, improving their potential lifetime earnings and enabling upward social mobility for them and their families.

We support programmes that improve tertiary education access, affordability and achievement for low-income students.



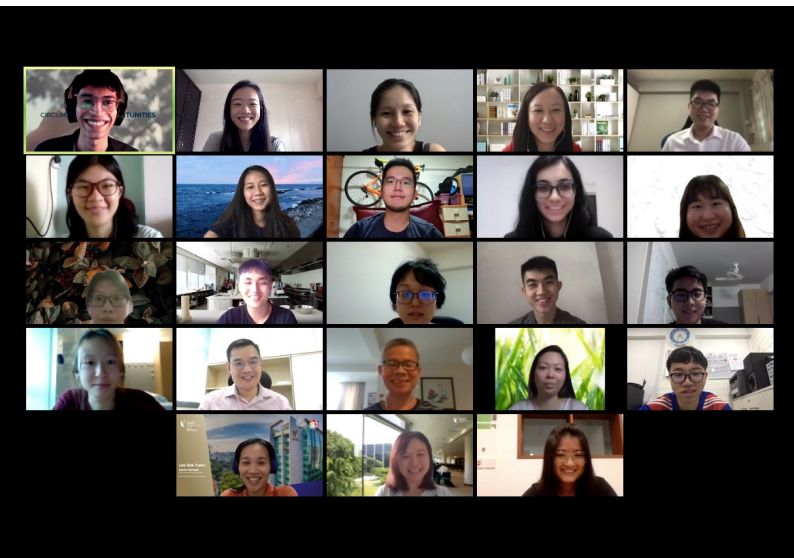
UNIVERSITY ACCESS

Equalising Access to a University Education

Quantedge Foundation has been supporting the commitments made by Singapore Management University (SMU) and the Singapore University of Technology & Design (SUTD) to guarantee 100% coverage of tuition fees for all incoming Singaporean students with the greatest financial need. The upfront guarantee helps to remove financial considerations from these students' enrolment decisions, so that they do not enter the workforce prematurely.

Through the SMU Access and the Quantedge Foundation - SUTD Education Opportunity Grant (SEOG) initiatives, we hope to encourage talented students from financially disadvantaged backgrounds to pursue their dreams, passions and interests across the broad range of programmes offered by SMU and SUTD.

SMU ACCESS



In 2017, Quantedge Foundation pledged \$8 million to SMU to seed fund the **SMU Access** initiative.

Under **SMU Access**, Singaporean students with the greatest financial need are guaranteed full financial aid that will cover the tuition fees for their entire undergraduate education. There is no limit to the number of students under **SMU Access** and eligibility for this broad-based grant is based only on their household economic circumstances.

Outcomes of SMU Access

The \$8 million endowment from Quantedge Foundation, to be disbursed over 10 years, supports in perpetuity 20-25 new recipients annually with full financial aid for up to 4 years, or 80-100 students in any given year.

Since 2017, \$3.2 million has been disbursed to SMU Endowment Fund. 108 students have been supported through SMU Access, and 80 students have received Quantedge Foundation scholarships.

3 Quantedge Foundation Scholars from the inaugural batch graduated in 2020 and found employment within 1 to 2 months of their graduation.

SUTD EDUCATION OPPORTUNITY GRANT

As part of our continuing efforts to promote inclusive and equitable quality education, Quantedge Foundation pledged \$3 million to seed-fund SUTD's commitment to guarantee full financial aid for all Singaporean students from families with the greatest financial need.

Like SMU Access, eligibility for **Quantedge Foundation - SUTD Education Opportunity Grant (SEOG)** is based only on a student's household economic circumstances. Eligible students with the greatest financial need will be guaranteed a financial package equal to their tuition fees and full coverage of hostel fees for the Freshmore terms.

"SUTD has introduced various financial schemes that are in line with the Government's efforts to enable every Singaporean student to have the opportunity to receive a good education regardless of family circumstances. The SUTD Community Grant and **SEOG** help ensure that all eligible students who want to pursue an education in technology and design will not miss out on an SUTD education because of financial difficulties."

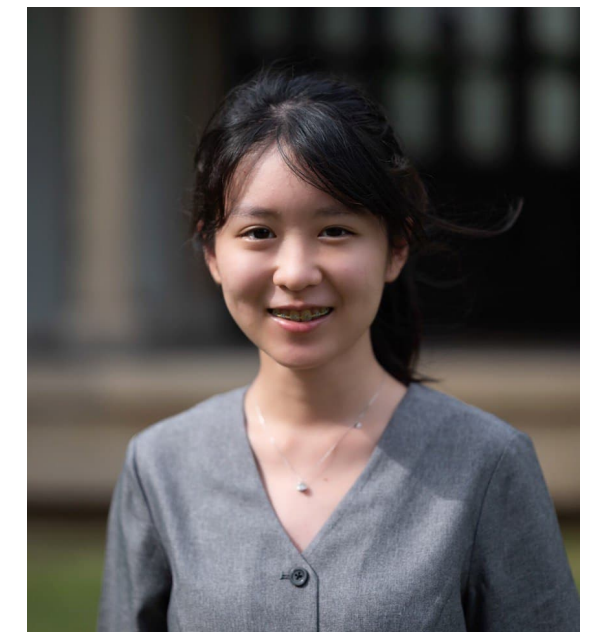
Professor Chong Tow Chong
SUTD President

In 2020, we welcomed our first batch of recipients from SUTD



The award has significantly lifted the financial burdens that weighed down on my mind previously and empowered me to dedicate more time to my studies and pursue other extra-curricular activities such as volunteering and learning about investment.

Peh Shu Ting
SUTD Freshmore
SEOG Recipient



Outcomes of SEOG

The \$3 million endowment from Quantedge Foundation, to be disbursed over 6 years, supports in perpetuity, about 8 new recipients annually with full financial aid for up to 4 years, or 32 students in any given year.

Since 2019, \$1 million has been disbursed to the endowment to support the Quantedge Foundation - SUTD Education Opportunity Grant (SEOG).

NUS BURSARY ENDOWMENT FUNDS

Equalising Access to a University Education

Quantedge Foundation has supported several Bursary Endowment Funds administered by the National University of Singapore (NUS) to support students from disadvantaged families, enabling them to benefit more fully from the university experience. We share NUS' belief that a university education should not be a privilege limited to the brightest students from comfortable backgrounds, but available to young people from all walks of life.

The endowments provide the various schools, colleges and/or faculties within NUS with a perpetual and self-sustaining source of funding to financially support deserving and needy students so that these students can continue to benefit from value-added experiential learning programmes, as well as immerse themselves fully in the residential college experience.

The Foundation has disbursed \$275,000 up until 31 December 2020 to support the following 11 bursary endowment funds by:

1. Faculty of Arts & Social Services Alumni Bursary Fund
2. Food Science and Technology Alumni Bursary Fund
3. Raffles Hall Alumni Bursary Fund
4. Eusoff Hall Bursary Fund
5. Kent Ridge Hall Bursary Fund
6. Faculty of Engineering Bursary Fund
7. Campus Couples Bursary Fund
8. Temasek Hall Bursary Fund
9. DRH-Sheares Hall Alumni Bursary Fund
10. School of Computing Pay-It Forward Bursary Fund
11. NUS ASEAN Scholars Pay-It-Forward Bursary Fund

Outcomes of NUS Bursary Endowment Funds

Since 2016, the bursary awards have provided financial support to 26 students.

OUR PROGRAMMES IN THE NEWS

Circle of Care

- "线上支援弱势家庭 关怀之圈助家长"管教"孩子", 12 Jul 2020, Lianhe Zaobao, <https://www.zaobao.com.sg/news/singapore/story20200712-1068434>

Keeping Learning Alive

- "If no work at all, how?' Low income families grapple with zero income, higher expenses amid circuit breaker", 30 Apr 2020, CNA Insider, <https://www.channelnewsasia.com/news/cnainsider/covid19-singapore-low-income-families-comcare-unemployment-12690942>
- "Home-based learning blues: Life in a rental flat during the COVID-19 circuit breaker", 29 Apr 2020, CNA Insider, <https://www.channelnewsasia.com/news/cnainsider/home-based-learning-rental-flat-low-income-covid19-12685142>

SUTD Education Opportunity Grant

- "SUTD Introduces New Grant to Defray the Cost of Education", 20 Feb 2020, SUTD Press Release, <https://www.sutd.edu.sg/About-Us/News-and-Events/Press-Releases/2020/2/SUTD-Introduces-New-Grant>



Scan to visit Quantedge Foundation's Publications and Newsroom webpage