



ANNUAL REPORT

QUANTEDGE
FOUNDATION

2019

Table of Contents

About Quantedge Foundation	3
Our Mission, Vision and Values	4
Chairman's Message	5
Our Philanthropic Thrusts	6
Key Highlights of 2019	7
The Early Years	8
The Growing Years.....	9
The Blossoming Years.....	12
The Community	14

About Quantedge Foundation

Quantedge Foundation (Singapore) Ltd (“the Foundation”) was incorporated in Singapore on 26 August 2015 as a Company Limited by Guarantee and registered as a Charity on 15 January 2016. It has been an approved Institution of Public Character since 17 February 2016.

Company Registration Number (UEN)

201532866G

Registered Address

20 McCallum Street
15th Floor, Tokio Marine Centre
Singapore 069046

Banker

DBS Bank Ltd.
Standard Chartered

Auditor

PricewaterhouseCoopers LLP

Corporate Secretary

Allen & Gledhill LLP

Our Mission, Vision and Values

Vision

UNEQUAL CIRCUMSTANCES | **EQUAL OPPORTUNITY**

A more inclusive and resilient society, where everyone has equal access to transformational opportunities that enable them to achieve their full potential.

Mission

We seek to deliver impactful solutions to a broad range of social challenges in Singapore by designing and/or funding innovative programmes that:

Transform Lives

Improving the access of children and youth from disadvantaged backgrounds to quality care, education and developmental opportunities, to help them unlock their potential, fulfil their dreams and build a better future for their families and themselves.

Empower Communities

Strengthening the capacities of vulnerable communities, facilitating community ownership and action, to sustain change and build an inclusive, resilient society.

Catalyse Change

Spearheading new approaches and leveraging strategic networks, research and technology, to raise awareness and galvanise change across the sector.

Core Values



IMPACT

We aspire to do good better. We seek effective solutions that address the root causes and have measurable, sustainable outcomes.



INNOVATION

We look for bold ideas and novel approaches to solving the problems of today and are prepared to make long-term social investments for a better tomorrow.



COLLABORATION

We work with the community and partner organisations, leveraging their wisdom and resources to achieve shared objectives and amplify our collective impact



INCLUSION

We respect differences in individuals and believe that we can harness the diversity of collective experiences, perspectives and opinions for greater impact.



INTEGRITY

We hold ourselves and our partners accountable to high standards of organisational integrity and responsible stewardship.

Chairman's Message

2019 was an eventful year for us as we took bold steps to embark on several new initiatives to **expand access to quality education** for children and youth.

Studying the social challenges Singapore faces today, **social mobility is one that cuts across age groups, income strata and backgrounds**. There is no silver bullet to this complex, multi-faceted issue and there is still much to do. This is why our efforts at alleviating unfavourable starting points span across age groups, from early childhood through to tertiary access. At each stage, the interventions vary as the accumulated disadvantages, key driving forces and levers differ.

Our work at Quantedge Foundation is underpinned by **our aspiration to do good better**. We prefer to support programmes that tackle the root causes of issues that we are trying to address, and to fund programmes that have measurable, sustainable outcomes.

We believe that the strength of philanthropy lies in the ability to drive longer-lasting change in the social sector through a **willingness to take risks** by backing innovative approaches and the **resilience to continually refine initiatives**. The Integrated Care Programme @ South West is one such initiative. We are supporting the replication of a programme model that has worked in one community to a new community. Through this, we hope to better understand the effectiveness of the various programme components when bringing them to scale.

We also see room for **greater, more effective collaboration** between like-minded donors and other stakeholders in pooling together complementary resources – be it funds, skills or operational capabilities – to achieve common outcomes. The Circle of Care programme is one such initiative that harnesses the diversity of skills, perspectives and resources in the community to provide holistic support for at-risk children in partner pre-schools.

As we look back on the past year, we are **grateful for the strong support from our programme partners**. They have enabled us to deepen our engagement with beneficiary groups, offered their candid feedback for improvement, and shown a willingness to experiment with new ways of doing things.

Looking ahead, we hope to continue making good investments in effective approaches and help move the needle on social mobility in Singapore.



Lee Yin Chao
Chairman

Our Philanthropic Thrusts

We strive to uncover, understand and address the root causes of issues as we curate, design and fund programmes and research to address social challenges in Singapore. We are also willing to collaborate with like-minded partners and to support novel approaches that could bring about longer-term, systemic changes to the sector.

In particular, we care deeply about creating and enabling access to opportunities for children and youth from less privileged backgrounds to do well in life. The programmes that we have designed or support span across the different age groups.



The Early Years

- Circle of Care



The Growing Years

- Raffles Scholarship Series
- Integrated Care Programme @ SouthWest
- Gaining STEAM! Programme



The Blossoming Years

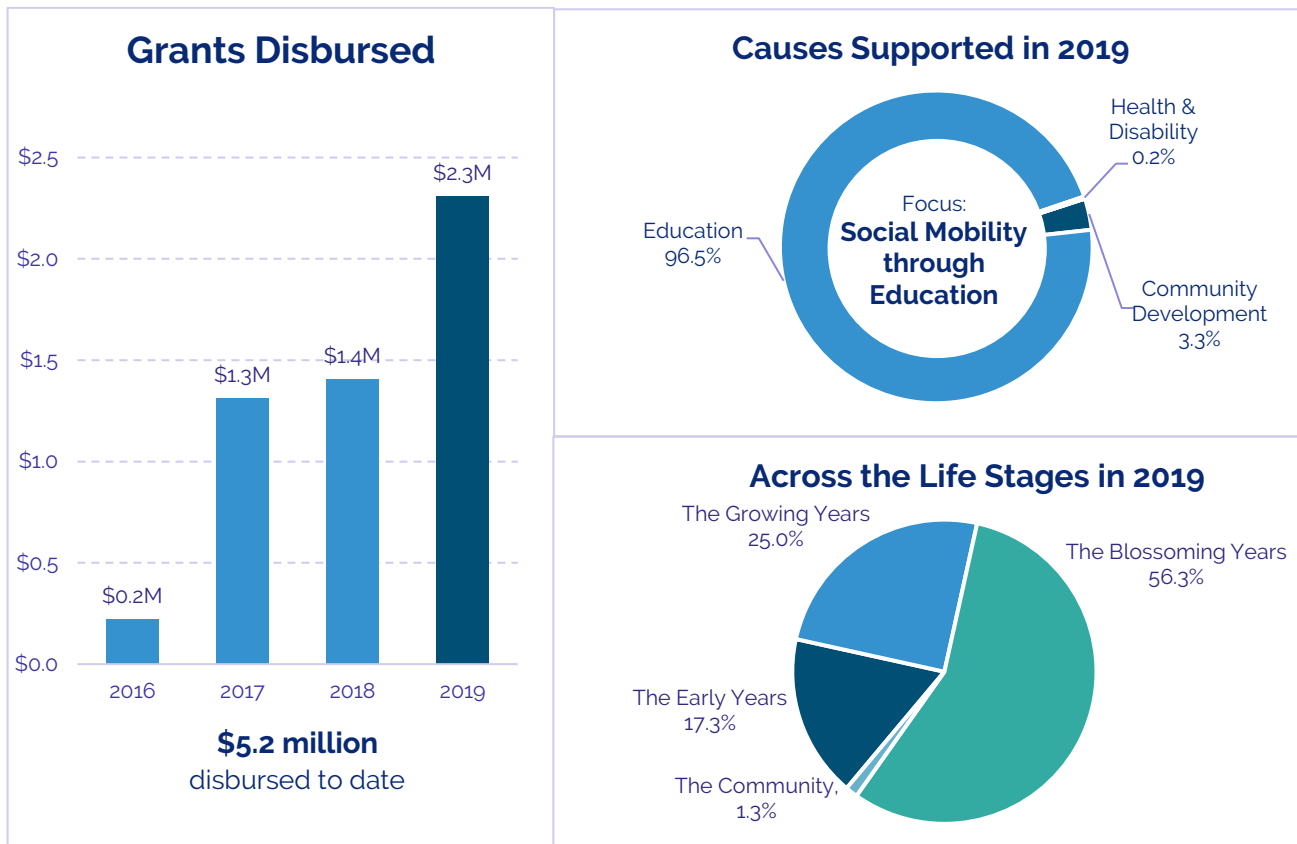
- SMU Access
- SUTD Education Opportunity Grant
- NUS Bursary Funds



The Community

- UNTEACHABLE Documentary
- NCSS-Supported Pilot Initiatives

Key Highlights of 2019



As part of our continuing efforts to expand and equalise access to quality education and development opportunities, key developments in 2019 include:

Integrated Care Programme
Committed **\$0.4M** over 3 years to co-fund the scaling and replication of a **wraparound, integrated model of support** to an estimated **135** students and their families in the South West CDC district.

Gaining STEAM! Programme
Piloted a series of after-school experiential **Science, Technology, Engineering, Arts and Mathematics (STEAM) workshops** for **40** latchkey primary school children on the Financial Assistance Scheme.

SUTD Education Opportunity Grant
Committed **\$3M** to fund SUTD's **guaranteed full financial aid** for students from the most disadvantaged backgrounds. The funds will support up to **8** new students each year for the full duration of their undergraduate studies.

Unteachable, the Documentary
Co-funded Unteachable, a documentary on students in the Normal Technical Stream, to **spark discussion on the true purpose of education**. It had its world premiere at the 2019 Singapore International Film Festival to 5 sold-out screenings and was the first-ever local film to clinch the Audience Choice Award.

The Early Years

In a child's formative years, the surrounding environment and lived experiences play a defining role in the child's development.

We support programmes that improve care and support for children from disadvantaged backgrounds across the physical, cognitive, social and emotional domains, to give them a more equal start and a stronger foundation that could increase their chances of success later in life.

Circle of Care Programme

The **Circle of Care** programme is an early intervention and preventive programme that adopts a holistic and integrated approach to create a conducive environment in partner preschools for at-risk children from low socio-economic backgrounds to flourish and achieve their potential.

Circle of Care combines brain science, social work and early childhood to provide proactive services and integrated support for all children, including those with greater needs. It brings together professionals from these domains into an interdisciplinary team of educational therapists, health specialists, social workers, teachers and principals, to provide wraparound and coordinated care for the children and their families.

Since 2018, Quantedge Foundation has been co-funding Phase 3 of **Circle of Care** with Lien Foundation and Care Corner Singapore. Phase 3 will target children from birth to 9 years and is expected to expand its reach from the existing 10 pre-schools to 30 pre-schools and 7 primary schools across three community clusters by 2023.



BLOOM parent-child workshops in partnership with Chapter Zero.



Health and development screenings at CoC partner pre-schools



Inter-disciplinary team meetings to discuss progress of CoC children

OUTCOMES

In 2019, the **Circle of Care** programme:

- *Expanded its reach:* Inked new partnerships with Presbyterian Community Services pre-school partner operator and Ministry of Education (MOE) Kindergartens, and onboarded 9 new partner pre-schools and 2 new primary schools, bringing the total numbers to 19 and 4 respectively.
- *Deepened its engagement with the community:* Introduced professional development platforms for pre-school partners as well as a series of parent-child workshops for children and toddlers, in partnership with Chapter Zero.
- *Continued to demonstrate measurable improvements in child outcomes* in literary and numeracy skills.

The Growing Years

It takes a village to raise a child. A caring community, in school or in the neighbourhood, plays a pivotal role in the growth and development of children from disadvantaged backgrounds, who often return to empty homes with little or no adult supervision after school.

We support programmes that improve low-income students' access to high quality, transformative opportunities to expand their opportunity set, while supporting their social and emotional development to enable them to thrive academically and socially.

Integrated Care Programme @ South West

The **Integrated Care Programme** is a ground-up, multi-stakeholder initiative to deliver upstream, child-centric, wrap-around and integrated care to vulnerable primary school children and their families across a spectrum of needs, in a targeted and sustainable manner.

Students in partner primary schools are screened by trained teachers or school counsellors to identify those who may need additional support.

A school social worker from SHINE Children and Youth Services acts as a consistent touchpoint for these students and their families, bridging the school, social services and the wider community to recommend appropriate services to them based on their assessed needs.

People's Association coordinates community resources to meet those needs, supported by an integrated case management system. This includes after-school programmes conducted by the Singapore Scouts Association both in school and the community to build the children's self-confidence and resilience, develop useful life skills, promote family bonding and foster a strong sense of community.

Quantedge Foundation has been supporting the implementation of the **Integrated Care Programme** in the South West Community Development Council district (or **ICP@SW**) from 2019 to 2021, as a proof of concept for the programme's scalability.



*ICP@SW Launch Ceremony
on 7 Sep 2019*

EXPECTED OUTCOMES

The **ICP@SW** will provide holistic support to an estimated 135 vulnerable students (and their families) from two primary schools – Chua Chu Kang Primary School and Teck Whye Primary School.

The expected outcomes include:

- Successful progression from primary school to secondary school
- Improved attendance, self-confidence and motivation levels of the students
- Reduction in the level of needs/risk of the families under case management
- Higher engagement of the community

Gaining STEAM! Programme

In 2019, Quantedge Foundation worked with Playeum and Clementi Primary School to pilot an after-school experiential and developmental programme, **Gaining STEAM!**, for about 40 primary school children. Each run of the programme consists of 6 sessions of facilitated Science, Technology, Engineering, Arts, Mathematics (“STEAM”) workshops, coupled with time for unstructured play.

Gaining STEAM! uses technology creatively to engage students from marginalised backgrounds through play and arts. STEM concepts learnt in the classroom come alive for the children, who also get to try coding and robotics to develop essential digital skills.

The games, the maker space and unstructured play at Playeum also enable the children to develop 21st Century competencies such as collaboration, communication, creativity, critical thinking and problem solving, while building their self-confidence and resilience.



Based on pre-/post-surveys completed by the children and in-depth observations by programme facilitators, the children have shown an increased interest in STEAM domains and shown improvements in their social and emotional learning skills. School teachers have also observed improvements in the children's behaviours and motivation at school.

OUTCOMES

To sustain the impact of the programme, Clementi Primary School plans to follow-through with similar activities in school and will be setting up a maker space where students from the **Gaining STEAM!** programme will have an opportunity to play an active role as playmakers and facilitators. Playeum has also given the schoolteachers resource recommendations to support similar activities back in school.

Raffles Scholarship Series

Raffles Institution (RI) is one of the leading secondary schools in Singapore, with a time-honoured tradition of welcoming highly talented students from diverse backgrounds.

Since 2015, Quantedge Foundation has been partnering RI to design and co-fund the **Raffles Scholarship Series** to help aspiring students from disadvantaged backgrounds enrol in RI and access the exposure and developmental opportunities offered through a Rafflesian education.

Under this initiative, high-performing, financially needy Primary 5 and 6 students from any primary school receive scholarships of \$1,000, as well as mentoring by RI students, who serve as role models for these children.



2019 Raffles Scholarship Award Ceremony (Primary 5 and 6) at Raffles Institution

The Year 1 to 6 Scholarships complements MOE's Independent School Bursary Scheme, and UPLIFT Scholarship, providing additional financial support to RI students from economically disadvantaged backgrounds, to cover their out-of-pocket school expenses. This enables them to participate fully in the whole range of developmental programmes, co-curricular activities and exposure trips at RI, together with their schoolmates.

OUTCOMES

Since 2015:

- About \$1,346,000 of scholarship monies has been disbursed by QFS
- 2,145 students have been supported through the **Raffles Scholarship Series**, including 297 students from 87 primary schools

In the longer term, this initiative aims to increase the socio-economic diversity of the student population in RI and to maintain RI as an inclusive and socially diverse institution, with a vibrant learning environment for talented youths from all walks of life.

The Blossoming Years

For youths from less privileged backgrounds, access to quality tertiary education is key to closing the education gap, improving their potential lifetime earnings and enabling upward social mobility for them and their families.

We support programmes that improve tertiary education access, affordability and achievement for low-income students, potentially changing their life trajectories.

University Access Initiatives at SMU and SUTD

Quantedge Foundation has been supporting the commitments made by Singapore Management University (SMU) and the Singapore University of Technology & Design (SUTD) to guarantee 100% coverage of tuition fees for all incoming Singaporean students from the most financially disadvantaged backgrounds. The upfront guarantee helps to remove financing considerations from these students' enrolment decisions, so that they do not hit the workforce prematurely simply due to concerns that they cannot afford their university tuition fees.

Through the SMU Access and SUTD Education Opportunity Grant (SEOG) initiatives, we hope to encourage talented students from financially disadvantaged backgrounds pursue their dreams, passions and interests across the broad range of programmes offered by SMU and SUTD.

SMU Access

In 2017, Quantedge Foundation pledged \$8 million to SMU to seed fund the **SMU Access** initiative.

Under **SMU Access**, all Singaporean students with financial need are guaranteed full financial aid that will cover the tuition fees for their entire undergraduate education. There is no limit to the number of students under **SMU Access** and eligibility for this broad-based grant is based only on their household economic circumstances.



Marcus Wong
QF Scholar AY2018/19
16th President of the SMU
Students' Association
(SMUSA) Council

"From the beginning of my term as President, supporting mental health has been a priority of our executive committee and it is something that resonates deeply with me... I hope that SMUSA can be a student body that adds colour to student life, puts a smile on students' faces and supports them during their times of trouble, ultimately living up to our tagline of being 'With you, for you!'"

The \$8 million endowment from Quantedge Foundation, to be disbursed over 10 years, supports in perpetuity 20-25 new recipients annually with full financial aid for up to 4 years, or 80-100 students in any given year.

OUTCOMES

Since 2017:

- \$2.4 million has been disbursed to SMU Endowment Fund
- 78 students have been supported through **SMU Access**
- 61 students have received Quantedge Foundation Scholarships

SUTD Enhanced Opportunity Grant

As part of our continuing efforts to promote inclusive and equitable quality education, Quantedge Foundation pledged \$3 million to seed-fund the SUTD's commitment to guarantee full financial aid for all Singaporean students from families with the greatest financial need.

Similar to SMU Access, eligibility for **Quantedge Foundation – SUTD Education Opportunity Grant** is based only on the student's household economic circumstances. All students who meet the household income and dwelling criteria are assured of a financial aid package that makes their entire undergraduate education free.



Announcement of gift to establish the Quantedge Foundation – SUTD Opportunity Grant at SUTD's 10th Anniversary Fundraising Dinner

EXPECTED OUTCOMES

In 2019, SUTD announced its commitment to all eligible students from families with monthly household income of less than \$690 per capita will receive a financial aid package that makes their entire undergraduate education and Freshmore hostel fees effectively free.

The \$3 million endowment from Quantedge Foundation, to be disbursed over 6 years, supports in perpetuity, about 8 new recipients annually with full financial aid for up to 4 years, or 32 students in any given year.

NUS Bursary Endowment Funds

Quantedge Foundation has supported several **Bursary Endowment Funds** administered by the National University of Singapore (NUS) to support students from disadvantaged families.

The endowments provide the various schools, colleges and/or faculties within NUS with a perpetual and self-sustaining source of funding to financially support deserving and needy students so that these students can continue to benefit from value-added experiential learning programmes, as well as immerse themselves fully in the residential college experience.

The Foundation has disbursed \$250,000 up until 31 December 2019 to support the following 10 sub-named Quantedge Foundation bursary endowment funds by:

1. Faculty of Arts & Social Services Alumni Bursary Fund
2. Food Science and Technology Alumni Bursary Fund
3. Raffles Hall Alumni Bursary Fund
4. Eusoff Hall Bursary Fund
5. Kent Ridge Hall Bursary Fund
6. Faculty of Engineering Bursary Fund
7. Campus Couples Bursary Fund
8. Temasek Hall Bursary Fund
9. DRH-Sheares Hall Alumni Bursary Fund
10. School of Computing Pay-It Forward Bursary Fund

OUTCOMES | Since 2016, the bursary awards have provided financial support to 16 students.

The Community

We support programmes that raise awareness of vulnerable communities and seed-fund initiatives to experiment and demonstrate the viability of new approaches to meet their diverse needs, to promote a more inclusive and caring society.

UNTEACHABLE, the documentary

Quantedge Foundation supported the production of a documentary film, **Unteachable**, which aims to spark discussion about the true purpose of education, and what it means to bring empathy and the joy of learning back into classrooms.

Unteachable explores the question “What does the joy of learning look like in a place like Singapore?” through Teacher Meixi’s journey to help her students in the Normal Technical Stream find meaning in their learning. She introduces Tutorial Relationships, a novel teaching method based upon the premise that everyone has the capacity to learn and teach, to empower teenagers to rise above the negative labels assigned to them and rekindle their innate love for learning.

Unteachable captures the learning journeys of teenagers over a 4-year school period through to their graduation, giving a rare insight into their lives, struggles, fears, and dreams.



OUTCOMES

Unteachable had its world premiere at the 2019 Singapore International Film Festival in November and was the first-ever local film to clinch the Audience Choice Award at the Festival. All tickets for its 5 screenings were sold out within hours of going live.

The documentary film’s producers have plans to encourage the use of the film as a tool to help educators and parents work with students to transform perspectives about achievement in school and how we learn and teach.

Venture Philanthropy Fund

Quantedge Foundation partnered the National Council of Social Services (NCSS) to support four social impact projects under the Venture Philanthropy Fund for three years, from 2017 to 2019.

These pioneering social impact projects span across (i) children, youth and family, (ii) seniors, and (iii) mental health, and involve working with different social service organisations, with active management and supervision by NCSS and the key donors under the VP Fund.

Project ELEVATE

Project ELEVATE is a service-learning project for ITE students to use the vocational skills they learn in class to meet the community's needs. It seeks to engage, equip and empower financially disadvantaged ITE students to thrive in school and improve their prospects for employment or further education.

Since its introduction, 566 students have enrolled in the 100-hour programme and 67% seeing it through to completion. About 50% of students who completed the programme saw improvements in at least 2 out of 4 outcome domains: connections, self-efficacy, contribution to society and academic motivation.



Employee Assistance Programme+

The Employee Assistance Programme+ (EAP+) provides timely support to employees with, or at risk of, mental health issues, as well as employers and co-workers.

- Close to 10,000 employees across 30 companies now have access to the EAP+ services. 1,287 employees have been educated on the importance of workplace mental health and the skills needed to enhance their mental wellbeing.
- 1,287 direct supervisors and co-workers were trained on how they can better support employees with mental health issues.
- 87 received individual counselling sessions.



Project SPIN (Single Parents INformed, INvolved, INcluded)

SPIN is a pilot programme by HCSA Dayspring which aims to improve the capacity of single parents to care for their children by designing community-based support mechanisms, providing resources that strengthen their social support network, improve their access to organised information. Since implementation, 110 single parents have been enrolled in the programme.

100% of the families that completed the programme demonstrated improvements in all of the desired outcome domains: ability to make well-informed decisions, parenting competencies, socio-emotional well-being and improved social network support. However, the majority do not complete the programme due to commitment challenges (e.g. conflicting work schedules and parenting responsibilities) and a lack of motivation.



WiSHINE Programme



WiSHINE is a pilot initiative by the Wicare Support Group to support senior widows in their journey of grief and adjustment to their lives without their partners, through the delivery of 3 core services – grief counselling, structured support groups and widow's mentoring. The programme targets senior widows aged 50 years and above, who are assessed to have difficulty in coping with grief and have weak emotional support network.

Of the widows who completed the support group session, 89% improved their scores on the Geriatric Depression Scale and 67% improved their scores on Lubben's Social Network Scale respectively. Overall, they indicated that they were able to express their grief without judgement in the support group.